

**VARIO** BY  
**VELUX**

**IMAGINED**  
BY YOU.  
**BUILT**  
WITH  
VARIO BY  
VELUX.



# WORLD-CLASS BESPOKE ROOFLIGHTS

Built just the way you want them. Crisp, custom-made designs that bring endless daylight and welcome nature indoors. Backed with 75 years of expert craftsmanship, innovation and elegant Scandinavian design.

## CUSTOMISATION MATTERS

You want your house to reflect your tastes, to incorporate a truly personal touch. So do we.

## SCANDINAVIAN DESIGN

Enjoy the sleek and simple influence of Scandinavian design that will give your house an effortlessly sophisticated vibe.

## LIFELONG ASSISTANCE

We're proud of our heritage. We're here to stay and more importantly, we're here for you.

## TRUE CRAFTSMANSHIP

75 years mastering and perfecting our art, finessing the science behind our rooflights and reaching the highest standards of quality.

## 10 YEARS GUARANTEE

We never promise more than we can deliver but we think it's always ok to deliver more than we promise.



## Discover endless possibilities of light

Learn about all the different ways that you can design with daylight using Vario by VELUX rooflights. Explore how you can bring your daylight dreams to life with a huge variety of shapes, finishes, colours and features to create the ultimate blend of natural light for your home.

<b>Why daylight and fresh air</b>	4
<b>Explore endless possibilities and combinations</b>	6
The <b>Long Slim</b> One	8
The <b>Rectangular</b> One	10
The <b>Square</b> One	12
The <b>Unlimited</b> One	14
The <b>Walk-on</b> One	16
The <b>Round</b> One	18
<b>Now, be bold and creative</b> (Our configurator)	20
<b>The tech stuff</b>	21
<b>Our heritage</b>	26
<b>Contact us</b>	27

# Why daylight and fresh air



## A Gift From Above: Discover 8 Things A Rooflight Can Do For You

If you're anything like most people, you probably spend a lot of time indoors right? Studies show that we spend an incredible 90% of our lives indoors. But being indoors doesn't mean you have to compromise on enjoying natural light.

A rooflight provides an ideal way to let more daylight into your home. Check out these amazing things rooflights can do for you.

### 1 Double Your Daylight

Did you know that a rooflight brings in twice the amount of daylight as a vertical window of the same size? Got a flat roof? Then rooflights are even better news for you, providing three times as much natural light as a standard façade window.

### 2 Express Your Signature Style

Imagine creating a truly personalised opening to the sky. Design a rooflight that expresses your innate sense of style and tones beautifully with the rest of your home.

### 3 Stimulate Your Senses

Artificial light is a necessary feature of our homes. But by its very utilitarian nature, it is constant. Natural light is always shifting and nowhere is this more pronounced than via a rooflight.

### 4 Cool, Clean Air

As our modern houses get ever more airtight, the importance of natural ventilation has never been bigger, for our health and comfort. Your rooflight will help to combat this ideal breeding environment in your home.

### 5 Bigger, Brighter, Better

Most homes were never designed to maximise natural light. Rooflights are the ideal antidote to these situations, allowing a cost effective and efficient way to transform your home into a brighter, bigger and better version of itself.

### 6 Because It's Worth It

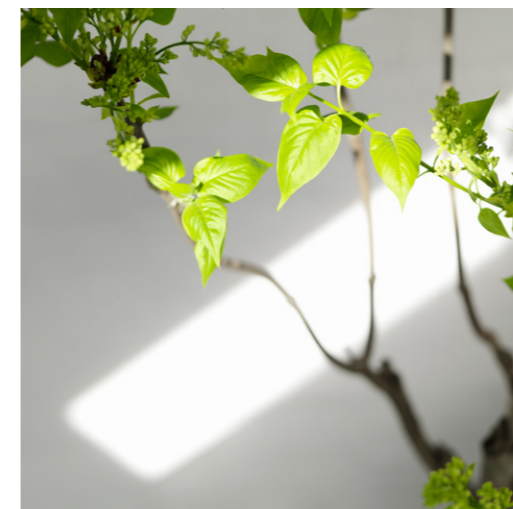
Did you know that rooflights actually increase the overall value of your property? By flooding your living spaces with natural light, you create a perception of a larger space.

### 7 A Happier, Healthier, More Productive You

Studies have proven the link between daylight and improved mood, enhanced morale, improved sleep, less fatigue and reduced eye strain. Natural light has been proven to better serve our innate circadian rhythm.

### 8 Save Energy, Save Money

Rooflights can actually save energy, enabling you to do your bit for conserving our environment. They do this through something called energy balance. It gives a positive net effect on your energy consumption and saving you money at the same time.



## Light Up Your Life: How To Create A Healthier, Happier Home

It may surprise you to know that we spend a staggering 90% of our lives indoors. What's more, this is frequently in dark and poorly ventilated housing that is more likely to make us ill.

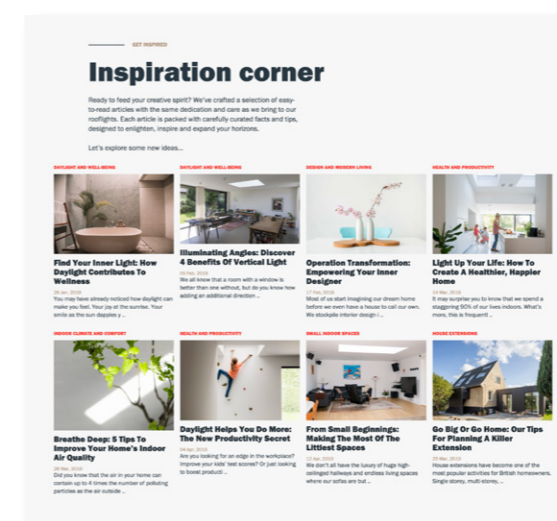
### What's the solution?

For most of us, moving home is a big deal and something that we usually can't afford to do right away. But for many, renovation is the answer. 73% of European homeowners cite improved well-being as a driver for renovation.

And the good news is that the government is trying to help remove the barriers to renovation, by subsidies or legislation. For example, the recent review of the EPBD (European Performance of Buildings Directive) includes requirements on indoor climate.

Here are three key studies that reveal the secrets of a healthier and longer life.

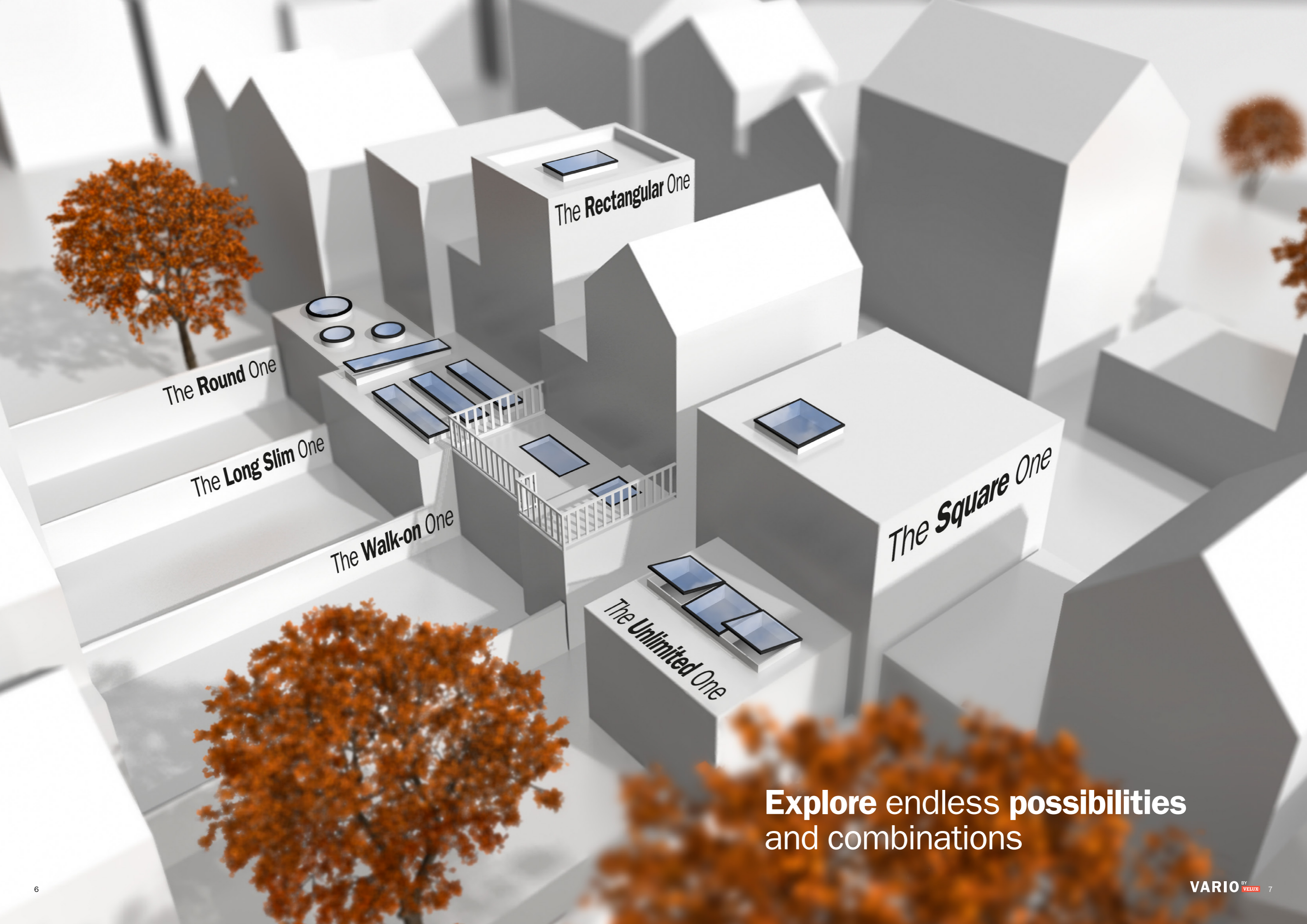
- 1 Dark houses make us 1.6 times as likely to be ill**  
According to the Healthy Homes Barometer, single family occupancy homes that are dark report illness 1.6 times more than those that are light. Adding indoor lighting can help you be healthier!
- 2 People who enjoy light get better sleep**  
A study of office workers revealed that workers who had windows in their offices, providing better indoor lighting, got on average 46 minutes more sleep than those without.
- 3 Good ventilation equals better health**  
Can you believe that 84 million Europeans currently live in buildings so damp and mouldy that they are a potential threat to physical and mental wellbeing? Poor indoor air can provoke a whole range of illnesses from headaches and sore eyes to allergies and asthma.



**FIND MORE INSPIRATIONAL ARTICLES WITH TIPS AND TRICKS**

Read them all at:

[vario.velux.com/inspirationcorner](https://vario.velux.com/inspirationcorner)



The **Round One**

The **Long Slim One**

The **Walk-on One**

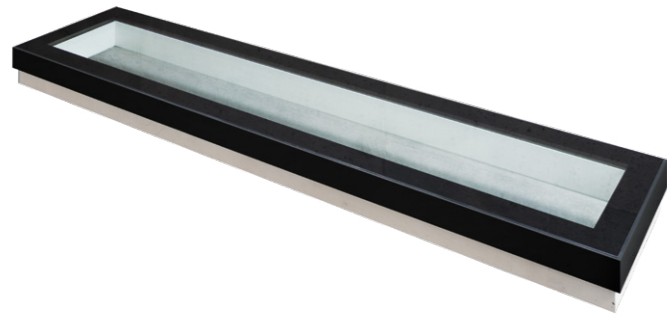
The **Rectangular One**

The **Unlimited One**

The **Square One**

**Explore endless possibilities  
and combinations**

# The Long Slim One



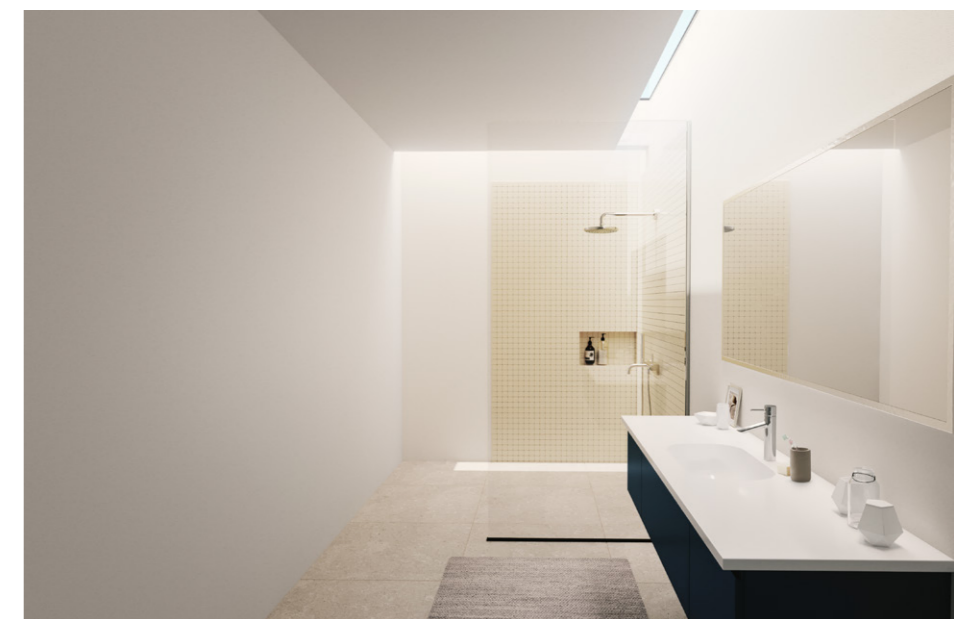
This roof window design is sleek, elegant and with a unique ability to diffuse daylight, creating a soft yet distinctive look. Multiple long window units can be combined along the length of a room for a truly dramatic, striking effect that creates a stunning ambient light effect and transforms the entire character of your space.

Your long window can be customised to include the optimal blend of features for your home, such as motorised ventilation, superior insulating glass, a walk-on feature and much more.



## CREATE A DAYLIGHT WATERFALL

Creates a stunning diffused daylight effect and transforms the entire character of your space with dramatic light beams pouring in along the length of a room.



From **£ 699\***

\*250 mm x 1000 mm, double layer IGU and 150 mm upstand. Delivery fee included. Excl. VAT.

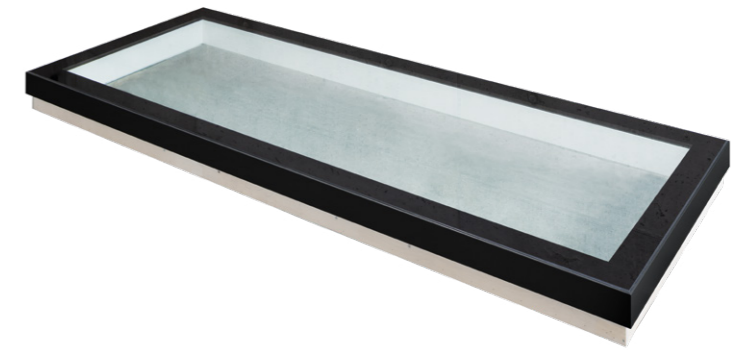


From

**£ 799\***

\*500 mm x 1000 mm, double layer IGU and 150 mm upstand. Delivery fee included. Excl. VAT.

## The Rectangular One



Our rectangular window allows you to sculpt your space with natural light, highlighting your favourite spaces with generous bands of natural light. The rectangular window is ideal for kitchens as it aligns perfectly with the shape of most creative culinary spaces, allowing you to flood your worktops with natural light or breathe new life into communal areas like breakfast bars and dining spaces.

The rectangular one allows you to create a real wow factor in pretty much any room. With the possibility to enlarge this shape to an awe inspiring 4m<sup>2</sup> glass, if you can imagine it, we can build it. We can also customise rectangular windows, so they offer the perfect combination of features for your lifestyle, including motorised ventilation, the best insulating glass, a walk-on function for roof terraces and other helpful features.

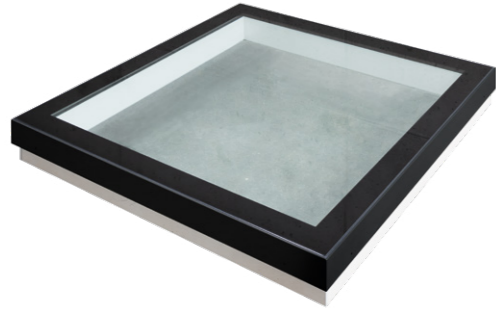


### SEE SENSATIONAL SKIES

Add roof windows that deliver the wow factor. Open up your space with huge spans of sky that allow you to enjoy more light for longer and welcome nature into your home.



# The Square One



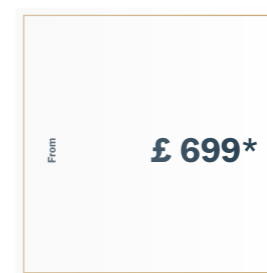
Enjoy symmetrical style with a statement square window that casts a beautiful, ever shifting light into your home. Dare to dream big, go for a large size and elevate your square window to appear almost as a glass ceiling, providing a powerful connection with the outside world. Alternatively, plan a smart pattern of smaller squares that will lend a charming dappled daylight effect to any room.

The square one can easily be installed almost anywhere in your house, allowing for a very flexible, functional window to the wider world. It can also come with a huge array of helpful features, such as highly insulating glass, motorised ventilation, walk-on capability for roof terraces and other great custom features.



## FIND A NATURAL RHYTHM

Dial into the natural rhythm of the day. Open your space up to the sky and allow pools of light to move across the room during the day, creating a stunning natural effect.



\*500 mm x 500 mm, double layer IGU and 150 mm up-stand. Delivery fee included. Excl. VAT.



# The **Unlimited** One



If you truly dream in daylight, the Unlimited One is the product for you. We take whatever span of daylight you wish to create and assemble a bespoke window combination or self-supporting rectangular or square units, cleverly aligned to create the greatest possible uninterrupted spans of glass over virtually unlimited distances.

Try an Unlimited, bespoke rooflight for truly astonishing extensions and “hold the front page” hallway makeovers. Each individual module that makes up the full bespoke window span can be fitted with your choice of bespoke features for natural ventilation, insulation and more.



## ENJOY UNLIMITED LIGHT

Enjoy the true feeling of outdoors indoors as you create an endless span of daylight across your whole living space, where the sky's the limit and your imagination can roam free.

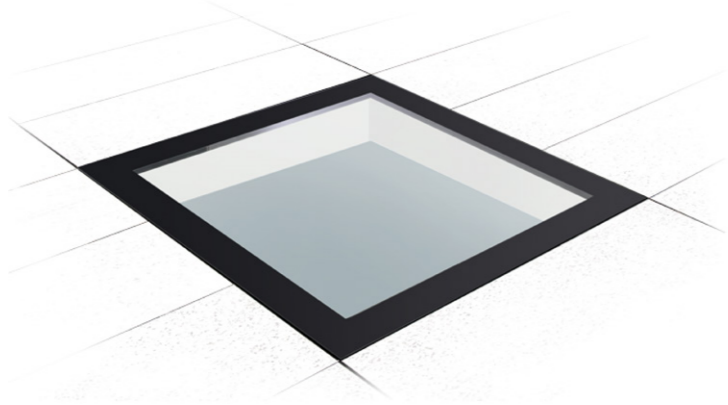


From		<b>£ 2,075*</b>
------	--	-----------------

\*3 x 537 mm x 600 mm. Total unlimited = 1800 mm x 600 mm, Double layer IGU and 150 mm upstand. Delivery fee included. Excl. VAT.



# The Walk-on One



If you're looking to enrich the room below your roof terrace with some delightful daylight designs, then our walk-on window is for you. The walk-on window adds value above and below, providing a pretty feature in your roof terrace and flooding the room below with lots of beautiful natural light.

Choose the perfect shape and size for your light-filled vision, then add to your custom design with functional features such as an anti-slip pane, which ensures that it will not be dangerous to walk on the product when your roof terrace is wet.



## CREATE DAYLIGHT CONNECTIONS

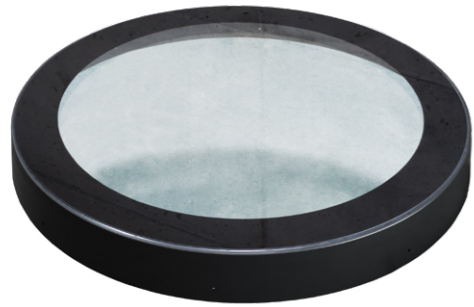
Whether it's letting the light in from the floor above or creating a stylish daylight design that compliments your roof terrace, this walk-on window does it all.



\*500 mm x 500 mm, double layer IGU and 150 mm upstand. Delivery fee included. Excl. VAT.



# The Round One



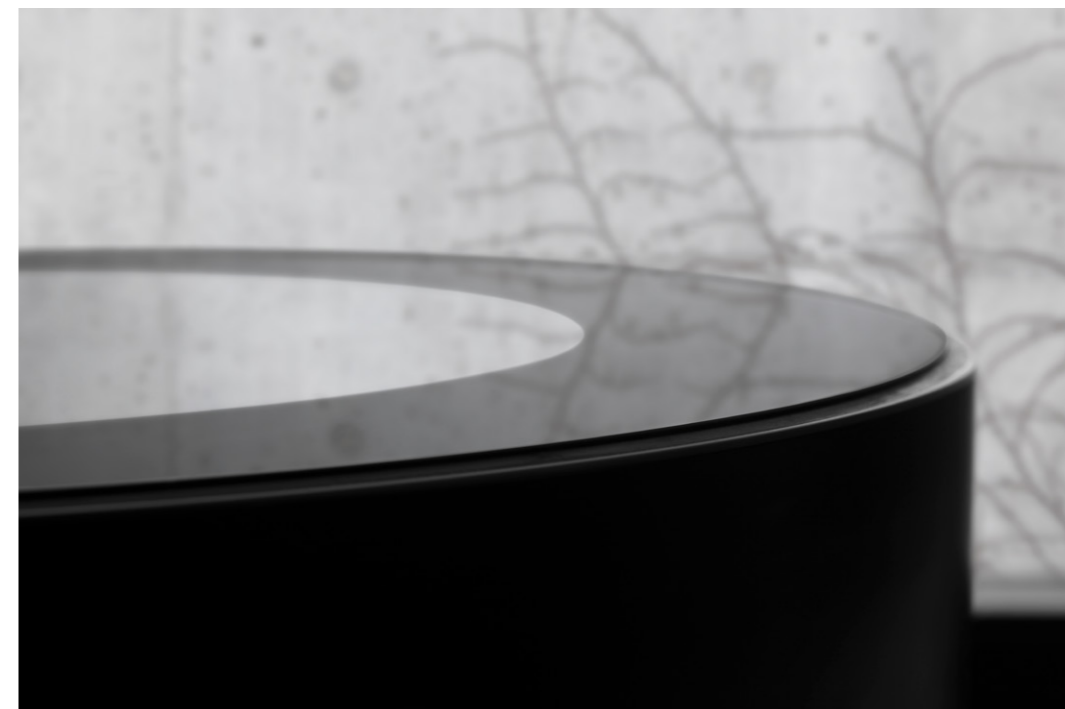
Create beautiful pools of natural daylight throughout your home with the help of round windows. Allow your imagination to fill each room with shafts of subtly shifting daylight, which gently alter the character of the space according to the natural rhythm of the day's passing.

Our circular window is a great way to add distinctive character to all kinds of spaces and what's more, you can add your choice of special features such as best in class insulation and much more to choose from, such as your choice of colours.



## POUR LIGHT IN

Cast distinctive round pools of natural light as you create a really different daylight design, illuminating your space in a truly original way.



\*Ø 900 mm. Delivery fee included. Excl. VAT. Excl. upstand.



# The Tech stuff



## The fixed rooflight

Our fixed rooflights are ideally suited to rooms where daylight is the only priority and spaces like roof terraces where an opening window wouldn't work.

## The opening rooflight

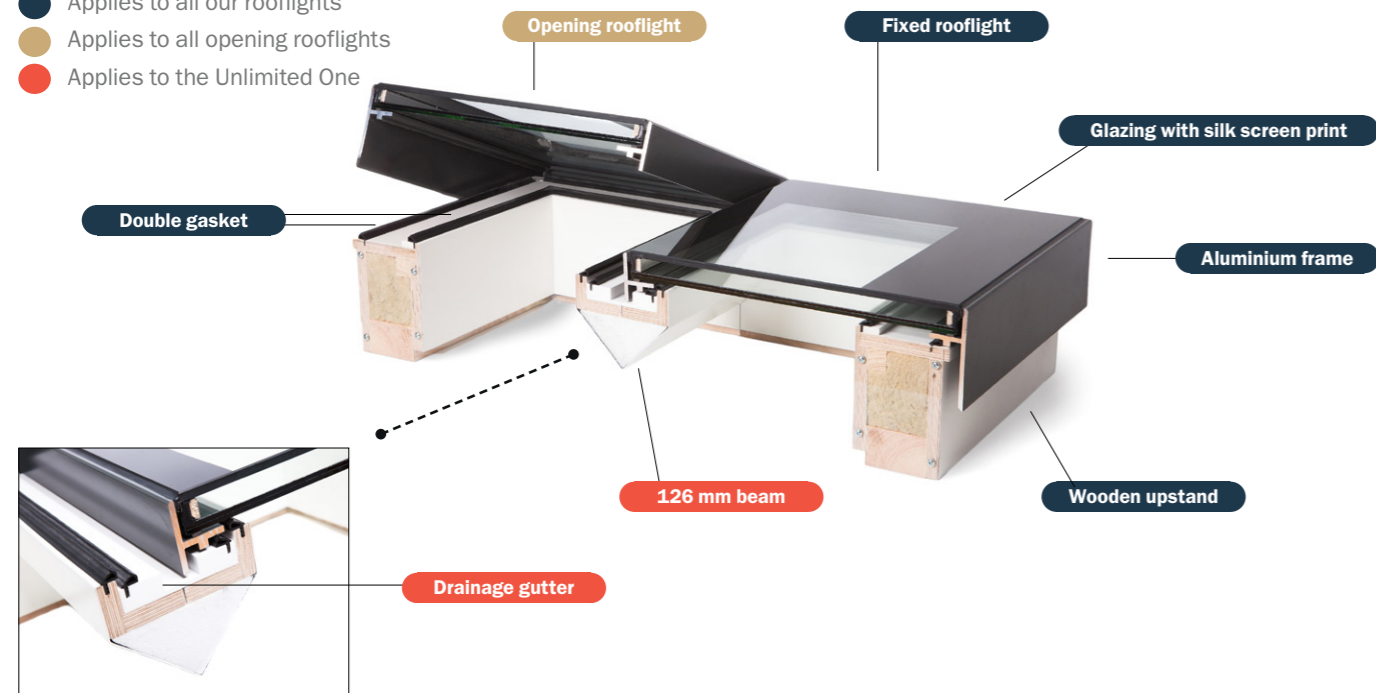
Our opening rooflights provide the double health benefits natural light and ventilation. They are an elegant and functional solution, with a fully integrated chain actuator concealed within the wooden upstand. The stroke length is 300 mm.

## These windows offer an opening option



## The construction

- Applies to all our rooflights
- Applies to all opening rooflights
- Applies to the Unlimited One

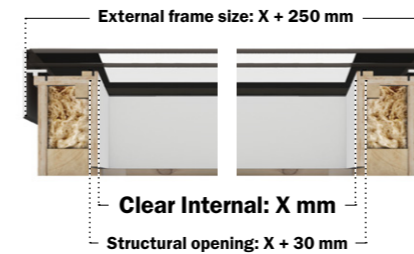


# The Tech stuff

## Size and Clear Internal Measurement

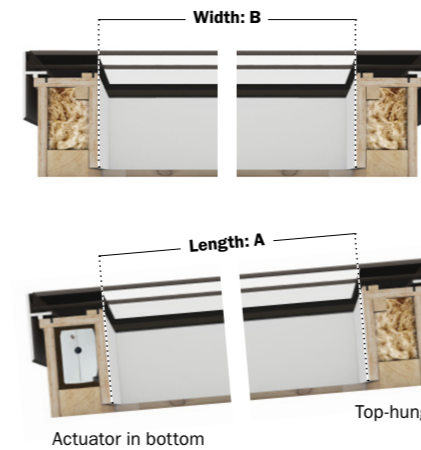
### WHAT YOU SEE IS WHAT YOU GET

We never promise more than we can deliver but we think it's ok to deliver more than we promise. Hence, when we talk about your rooflight measurement, we talk about the size of the skyward space you will be getting and not about the hole in the roof. We call this the clear internal measurement.



## HOW TO MEASURE YOUR VARIO BY VELUX

To begin with, you should decide whether the rooflight should be made to fit an already existing hole in the roof, or whether the hole in the roof will be made to fit your desired bespoke rooflight size.



You configure the clear internal measurement, which equals the daylight you get. Be aware that the structural opening (hole in the roof) has to be + 30 mm larger for both the width and length when installing your rooflight.

The length of the rooflight follows the slope of the roof, whereas the width is where the actuator (opening mechanism) can be integrated. It is important to remember that the width with the actuator should always be installed at the lowest point. See the sectional drawings for further information.

## Product Possibilities & Limitations

- Fixed rooflight (Double & Triple Glazing)**  
The Long Slim One, The Rectangular One, The Square One, The Walk-on One
  - Width (B) and Length (A): 250 - 3000 mm (either B or A must be ≤ 1600 mm)
  - Max. clear internal area: 4 m<sup>2</sup>
  - A/B ratio: 1:6
  - The Walk-on feature is possible on all square/rectangular arch types up to 2 m<sup>2</sup>
  - The Walk-on One has ultra strong and durable glazing

- Opening rooflight (Double Glazing)**  
The Long Slim One, The Rectangular One, The Square One
  - Width (B): 600 - 3000 mm
  - Length (A): 600 - 2000 mm (either B or A must be ≤ 1600 mm)
  - Max. clear internal area: 4 m<sup>2</sup>
  - A/B ratio: 1:6
  - One actuator for clear internal area ≤ 2 m<sup>2</sup> and width ≤ 2000 mm
  - Two actuators for clear internal area > 2 m<sup>2</sup> (Width (B) must be ≥ 1200 mm)

- Opening rooflight (Triple Glazing)**  
The Long Slim One, The Rectangular One, The Square One
  - Width (B): 600 - 3000 mm
  - Length (A): 600 - 2000 mm (either B or A must be ≤ 1600 mm)
  - Max. clear internal area: 3 m<sup>2</sup>
  - A/B ratio: 1:6
  - One actuator for clear internal area ≤ 1.5 m<sup>2</sup> and width ≤ 2000mm
  - Two actuators for clear internal area > 1.5 m<sup>2</sup> (Width (B) must be ≥ 1200 mm)

- Fixed Unlimited rooflight (Double & Triple Glazing)**  
The Unlimited One
  - Width (B): 250 - 3000 mm
  - Length (A): 250 - 1500 mm
  - Max. clear internal area: 4 m<sup>2</sup> (depends on snow and wind loads)
  - A/B ratio: 1:6

- Opening Unlimited rooflight (Double Glazing)**  
The Unlimited One
  - Width (B): 600 - 3000 mm
  - Length (A): 600 - 1500 mm
  - Max. clear internal area: 4 m<sup>2</sup> (depends on snow and wind loads)
  - A/B ratio: 1:6
  - One actuator for clear internal area ≤ 2 m<sup>2</sup> and width ≤ 2000 mm
  - Two actuators for clear internal area > 2 m<sup>2</sup> (Width (B) must be ≥ 1330 mm)

- Opening Unlimited rooflight (Triple Glazing)**  
The Unlimited One
  - Width (B): 600 - 3000 mm
  - Length (A): 600 - 1500 mm
  - Max. clear internal area: 3 m<sup>2</sup> (depends on snow and wind loads)
  - A/B ratio: 1:6
  - One actuator for clear internal area ≤ 1.5 m<sup>2</sup> and width ≤ 2000 mm
  - Two actuators for clear internal area > 1.5 m<sup>2</sup> (Width (B) must be ≥ 1330 mm)

- Fixed Round rooflight (Double Glazing)**  
The Round One
  - Ø: 900 mm to 1350 mm
  - Max. clear internal area: 1.43 m<sup>2</sup>

# The Tech stuff

## Wooden Upstand



The wooden upstand is supplied in either 150, 300 or 450 mm, depending on project requirements, or visual architectural ideas. If other measurements are needed, please contact our Daylight Experts.

## Roof Pitch



Our rooflights can be installed in flat and pitched roofs from 0° up to 15°. A minimum 5° pitch is recommended for the rooflight installation to avoid pooling water on the glass surface.

## Material – Finish & Colours

### EXTERNAL FRAME (EXTERNAL SURFACE)

Material: Aluminium (5 mm)  
Surface: Powder coated

Colour: RAL 9005, gloss 30 (Jet black)  
Free selective

Colour: RAL 7043, gloss 30 (Traffic grey)  
Free selective

Colour: CUSTOM RAL,  
(Evaluated upon request)  
Extra fee

### WOODEN UPSTAND (INTERNAL SURFACE)

Material: Wood, insulation and vapour barrier  
Internal surface and top: Waterproof plywood, Waterbased white coating  
External surface: Waterproof plywood untreated

Colour: RAL 9010, gloss 30 (Pure white)

## Glazing with advanced sun protection – Sun

Double Glazing = **DG** Triple Glazing = **TG**

Having too much heat or light enter through your rooflight can present as much of a problem as trying to keep heat in. Our solar control glazing offers efficient reduction of the heat from the sun. The human eye will easily compensate for the reduced light transmittance, which is approx. 20% less than our LowE glazings. There will be no green/blue tint in the glazing, merely a darker luminance.

For full insulating glazing table go to:

[vario.velux.com/downloadcentre/otherdocumentation](http://vario.velux.com/downloadcentre/otherdocumentation)

Glazing	Coating	IGU code	Solar factor g-value (%)	Light transmittance $\tau_v$ (%)
<b>DG</b>	Sun	21V	33	61
<b>TG</b>	Sun	31V	31	55



Double layer glazing with low emissivity coating (LowE) and with a light transmittance of 80%.



Double layer glazing with Sun coating (Sun) and with a light transmittance of 61%.

# The Tech stuff

## Insulating glazing unit (IGU)

Double Glazing = **DG** Triple Glazing = **TG** Walk-on Glazing = **WG** Walk-on Anti-slip Glazing = **WAG**

Glazing	Coating	IGU code	Clear internal area a (m <sup>2</sup> )	Thermal transmittance (rooflight) U <sub>w</sub> value [W/(m <sup>2</sup> K)]		Thermal transmittance (glazing) U <sub>g</sub> value* [W/(m <sup>2</sup> K)]
				Window size < 2,3 m <sup>2</sup>	Window size ≥ 2,3 m <sup>2</sup>	
<b>DG</b>	LowE	20V	a ≤ 2 m <sup>2</sup>	1.7	–	1.1
<b>DG</b>	LowE	20Y	2 m <sup>2</sup> < a ≤ 2.8 m <sup>2</sup>	1.7	1.6	1.1
<b>DG</b>	LowE	20Z	2.8 m <sup>2</sup> < a ≤ 4.0 m <sup>2</sup>	–	1.8	1.3
<b>TG</b>	LowE	30V	a ≤ 2 m <sup>2</sup>	1.2	–	0.5
<b>TG</b>	LowE	30Y	2 m <sup>2</sup> < a ≤ 2.8 m <sup>2</sup>	1.2	1.1	0.5
<b>TG</b>	LowE	30Z	2.8 m <sup>2</sup> < a ≤ 4.0 m <sup>2</sup>	–	1.2	0.6
<b>WG</b>	LowE	25V	a ≤ 1 m <sup>2</sup>	2.0	–	1.3
<b>WG</b>	LowE	25Y	1 m <sup>2</sup> < a ≤ 1.5 m <sup>2</sup>	2.0	–	1.3
<b>WG</b>	LowE	25Z	1.5 m <sup>2</sup> < a ≤ 2.0 m <sup>2</sup>	2.0	–	1.3
<b>WAG</b>	LowE	26V	a ≤ 1 m <sup>2</sup>	2.0	–	1.3
<b>WAG</b>	LowE	26Y	1 m <sup>2</sup> < a ≤ 1.5 m <sup>2</sup>	2.0	–	1.3
<b>WAG</b>	LowE	26Z	1.5 m <sup>2</sup> < a ≤ 2.0 m <sup>2</sup>	2.0	–	1.3

The glazing unit has a 115 mm black silk screen print along the edge.  
\* Slope α = 90°

Glazing	Coating	IGU code	Construction (outside - inside)	Solar factor g-value (%)	Light transmittance $\tau_v$ (%)	Acoustic performance dB
<b>DG</b>	LowE	20V	8H - 16 argon - 44.2 Low E	61	80	34 (-1; -4) dB
<b>DG</b>	LowE	20Y	8H - 14 argon - 55.2 Low E	61	79	34 (-1; -4) dB
<b>DG</b>	LowE	20Z	8H - 12 argon - 66.2 Low E	61	79	33 (-1; -4) dB
<b>TG</b>	LowE	30V	8H - 18 argon - 6H - 18 argon - 55.2 Low E	53	71	36 (0; -3) dB
<b>TG</b>	LowE	30Y	8H - 16 argon - 6H - 18 argon - 66.2 Low E	52	71	36 (0; -3) dB
<b>TG</b>	LowE	30Z	8H - 15 argon - 6H - 15 argon - 88.2 Low E	51	69	35 (0; -3) dB
<b>WG</b>	LowE	25V	6.8.8H - 16 argon - 44.2 Low E	50	74	36 (-1; -4) dB
<b>WG</b>	LowE	25Y	8.8.8H - 16 argon - 55.2 Low E	49	73	36 (-1; -4) dB
<b>WG</b>	LowE	25Z	8.10.8H - 16 argon - 55.2 Low E	49	73	36 (-1; -4) dB
<b>WAG</b>	LowE	26V	Anti-slip - 6.8.8H - 16 argon - 44.2 Low E	24	28	36 (-1; -4) dB
<b>WAG</b>	LowE	26Y	Anti-slip - 8.8.8H - 16 argon - 55.2 Low E	24	29	36 (-1; -4) dB
<b>WAG</b>	LowE	26Z	Anti-slip - 8.10.8H - 16 argon - 55.2 Low E	24	29	36 (-1; -4) dB

# The Tech stuff

## Performance example for opening 1500x1500 triple layer IGU

Product code: UVM 15001500 0530Y 150 18BI05

Essential characteristics	Performance	§	NB*
Resistance to wind load	Class C5	4.2	1235
Resistance to snow load	8 mm float - 16 mm - 6 mm float - 18 mm - 12.76 mm (66.2) laminated float	4.3	-
Reaction to fire	Class B-s1,d0	4.41	0402
External fire performance	NPD	4.42	-
Watertightness	Class E1200	4.5	1235
Impact resistance	Class 4	4.7	1205
Acoustic performance	36 (0; 3) dB	4.11	-
Thermal transmittance	1.1 W/m <sup>2</sup> K	4.12	1235
Solar factor	0.71	4.13	-
Light transmittance	0.52	4.13	-
Air permeability	Class 4	4.14	1235

NPD: No performance determined

\* Notified body/ies: <http://ec.europa.eu/growth/tools-databases/nando/>



Get all performance figures through our CE marking configurator: [velux.co.uk/help-and-advice/cemarking](http://velux.co.uk/help-and-advice/cemarking)

## Chain Actuator for Opening Solutions

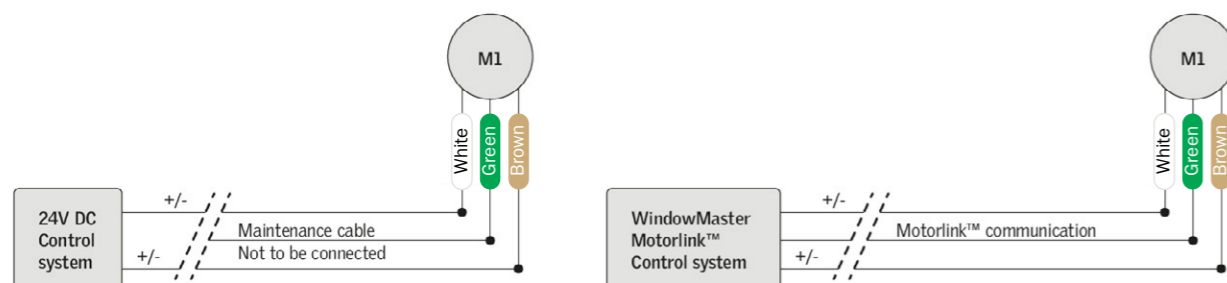
In opening rooflights, the actuator is fully integrated in the wooden upstand. The actuator is not visible from the inside when the rooflights are closed, thus there is no visual difference between fixed and opening rooflights. An opening product is operated by either 1 or 2 actuators depending on the clear internal area and the rooflight's width. The rooflights must be controlled by a separate OS ± 24 V system.

In the OS ± 24 V, the actuators are controlled by ± 24 V DC. In addition, the rooflight actuator can be integrated in common building automation fieldbus systems, e.g. KNX, BACnet, LON and Modbus, through the integrated MotorLink™ technology.

Connection to a fieldbus system requires a separate control box between fieldbus system and actuator. For the OS ± 24 V, only the actuators are supplied by Vario by VELUX.

### Planning the Electrical System:

- The control system is part of the opening rooflights and is included in the price
- Wiring from the actuator is included
- The actuator can be controlled by either ±24 V DC or Window-Master MotorLink™



# The Tech stuff

£ 190

## Sensor-based Automation – The Clever One

The Clever One provides wireless and automatic opening and closing of Vario by VELUX rooflights. You choose when it activates based on things like rain, wind-speed and indoor and outdoor temperature. For example, you could choose to automatically close the windows if the outdoor temperature drops below 7 degrees or automatically open the window if the indoor temperature raises above 26 degrees. Also in case of a sudden cloudburst, you can have peace of mind as the windows will close automatically.

- The control panel has an integrated temperature sensor and also displays the indoor and outdoor temperatures
- Easy to install, operate and configure
- The safety feature in The Clever One ensures that the rooflights are closed in case of rain, strong wind and low outdoor temperature.
- You can set an indoor temperature value to automatically trigger the opening of the rooflights.
- Additional window actuators can be connected to NV Solo® in one group (zone)

### No. of actuators

Glazing – Double or Triple	Double Glazing		Triple Glazing	
	≤ 2000 mm	> 2000 mm	≤ 2000 mm	> 2000 mm
Width measurement (actuator side)	≤ 2000 mm	> 2000 mm	≤ 2000 mm	> 2000 mm
Clear internal area – max.	≤ 2 m <sup>2</sup>	> 2 m <sup>2</sup> ≤ 4 m <sup>2</sup>	≤ 1,5 m <sup>2</sup>	> 1,5 m <sup>2</sup> ≤ 3 m <sup>2</sup>
No. of actuators* integrated in upstand	1	2	1	2

### Our control unit components for opening rooflights

Control unit dependant on No. of actuators	1	2
3A control unit for single actuator (WUC 102 0103) – 3 outputs	Included	-
10A control unit for up to 3 motors (WCC 310 S 0410 01) – 10 outputs	Add-on	Included
20A control unit for up to 6 motors (WCC 320 S 0810 01) – 10 outputs	Add-on	Add-on

### Our control switches and sensor

Opening switch (WSK 103 0101)	Included
The Clever One (NV Solo rain and wind sensor)	Add-on

\*WMU9093140 (3 Amp/actuator)

### The automation hardware



**The Clever One**  
NV Solo remote control and a rain and wind sensor



**WSK 103**  
Opening switch



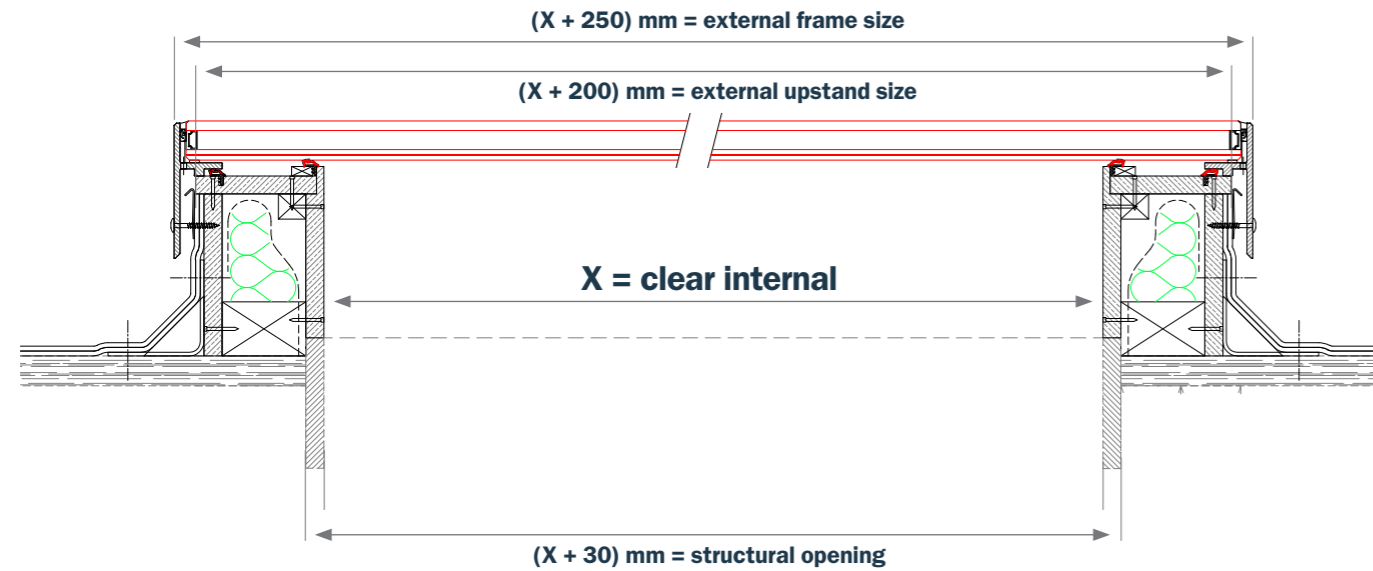
**WUC 102**  
Control unit  
– 1 motor  
– 3 outputs



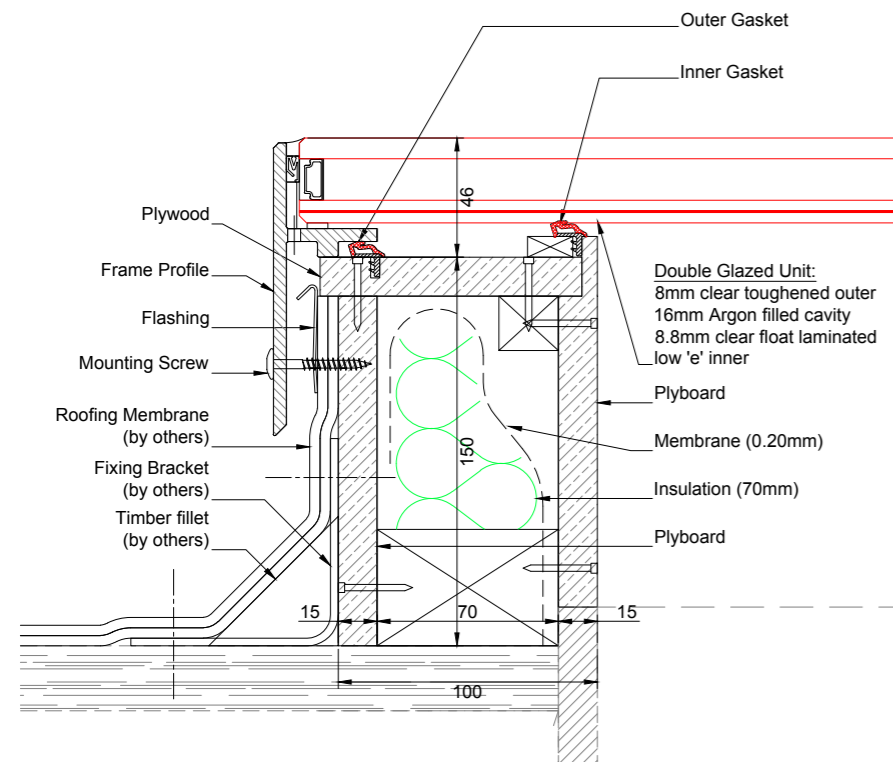
**WCC 310/320**  
Control unit  
– 3/6 motors  
– 10 outputs

# The Tech stuff

## Sectional Drawings



## Detail of the Sectional Drawing



Get all the sectional drawings:  
[vario.velux.com/downloadcentre/technical-drawings](http://vario.velux.com/downloadcentre/technical-drawings)

## CPD

Our RIBA approved Vario by VELUX CPD is now available. Call us to get more information and book an appointment.

Call us at:  
**+44 (0) 1592 778 246**  
 or give us an email at:  
**vario@velux.co.uk**

# The Tech stuff

## Installation Guides

Everything in its right place with no hassle. When we claim full support for product advice and installation guidance, we mean it. We provide comprehensive installation guides to put in your new Vario by VELUX window. If in doubt – call us.



Find what you need:  
[vario.velux.com/downloadcentre/installationguides](http://vario.velux.com/downloadcentre/installationguides)

## Guarantee

10 years on the modules

3 years on the actuator

Our Vario by VELUX rooflights are supported by a 10-year guarantee. Actuators and other electrical components that are a part of the product solution come with a 3-year guarantee.

The guarantee is subject to correct installation and usage.



Want to know more:  
[vario.velux.com/support/veluxguarantee](http://vario.velux.com/support/veluxguarantee)

# Our Heritage

Vario by VELUX is the exciting, fully customisable, made to measure rooflight windows range from VELUX, where you design your perfect bespoke daylight experience. Put simply, you let your imagination run wild, dare to dream and design in daylight, then we help you translate that vision into a real room in your home.

Our design aesthetic is minimalist, elegant, with form complimenting function and each product inspired by a long and noble Danish design tradition. We take our more than 75 years' experience in selecting the finest quality materials, fusing them into stylish modern window designs, and using the most expert craftsmanship to create the best possible fit for your home.

We support you from the very second of your initial inspiration, to the moment where you stand back and revel in the beautiful reality of your home. We help you put shape on your dreams, choosing the best window that'll create that perfect effect you are looking for. We're always there for you, whether that's helping out by providing delivery, a 10 year window guarantee or lifelong support, so the level of care you receive is of the same standard as your beautiful, Scandinavian design rooflights.



1942

**Velux-Ovenlysvinduer**

1944



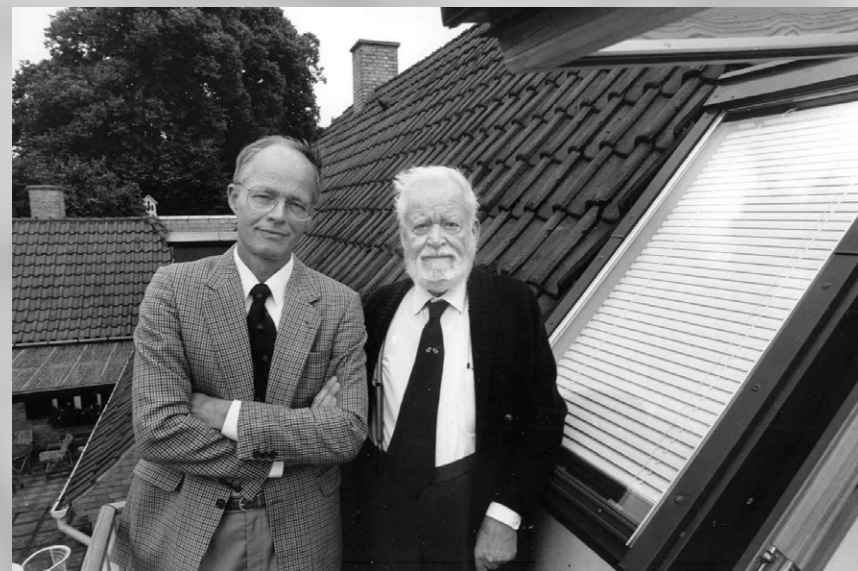
1954



1974



1983



Villum Kann Rasmussen (right), VELUX founding father, and his son Lars Kann Rasmussen (left).

# Get your own bespoke rooflight

## DAYLIGHT DESIGN

Share your ideas and get help from someone who shares your passion for beautiful design.

## INSPIRATION INSIGHTS

Ask us about inspirational notes and insights that will serve as a stimulus to create your perfect daylight oasis.

## PRODUCT COUNSELING

If you're not sure which of our rooflights you need, we can guide you to your perfect match.

## INSTALLATION GUIDANCE

Get support and guidance to help your rooflight installation be smooth and stress free.

## WANT TO GET IN TOUCH?

### DAYLIGHT EXPERTS:

Call us at +44 (0) 1592 778 246  
or give us an email at [vario@velux.co.uk](mailto:vario@velux.co.uk)

### IMAGINE, DESIGN, GET YOUR OWN

Try our configurator at [vario.velux.com/buildyourown](https://vario.velux.com/buildyourown)

We're here to support you with your rooflight design and purchase in any way we can. All you have to do is ask our Daylight Experts!



VELUX Company Ltd.  
Vario by VELUX  
Woodside Way  
Glenrothes  
Fife  
Scotland  
KY7 4ND

Email: [vario@velux.com](mailto:vario@velux.com)

Web: [vario.velux.co.uk](http://vario.velux.co.uk)

# VARIO

**VARIO** BY **VELUX**

